

**LEARN**

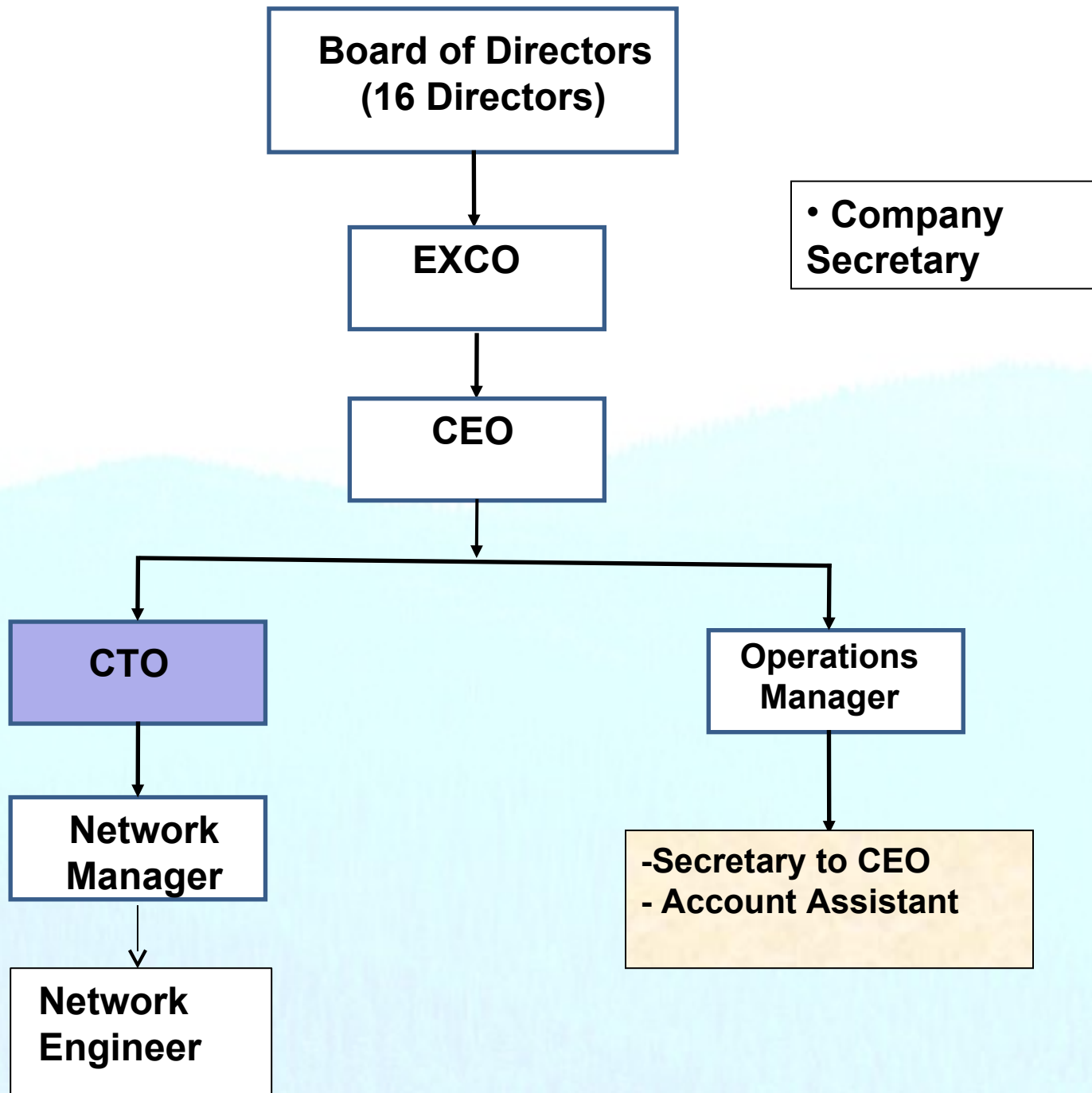
**Lanka Education And Research Network**

Kirthi S. Walgama  
CEO – LEARN

TEIN meetings -APAN42  
Hong Kong  
2016

# LEARN

- Limited Guarantee Company (since 2009)
- Own by 15 state funded universities and  
University Grants Commission
- Membership
  - Higher Education and Research Institutes
  - 16 Full Members
  - 13 Associated/Affiliated Members



## **LEARN Local Links**

- Total of 67 local links (Fiber Links)
- Highest local link bandwidth 1Gbps
- Lowest 20 Mbps

# **LEARN Business Model**

- **Purchase Local links from ISPs (SLT)**
- **Purchase Internet Access BW from ISPs (Dialog, SLT)**
- **International Link**

**Sell with a overhead to maintain sustainability**

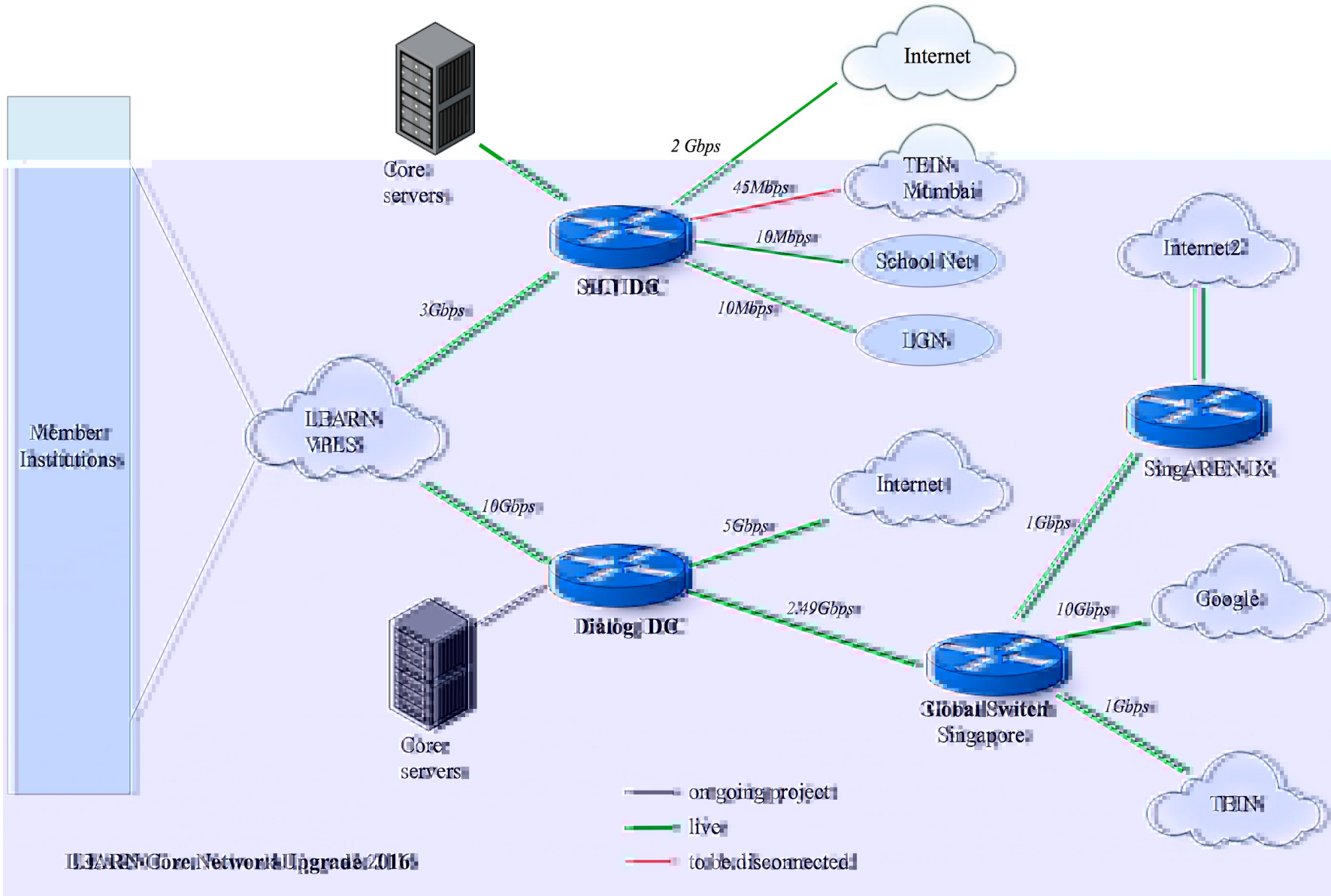
# **LEARN SURPLUS**

## Used for

- **LEARN Operations**
- **Paying over dues**
- **System Upgrade (over 143 K US\$)**
- **Training (free of charges – 10K US\$)**

# **LEARN System UPGRADE (2015-2016)**

- **5.0 Gpbs Internet Access Bandwidth from Dialog**
- **Sri Lanka to Singapore Global Switch International Direct, Dedicated 2.5 Gbps link from Dialog**
- **2.0 Gbps Backup Link from SLT**
- **Total 7.5 Gbps plus 2.0 Gbps backup**



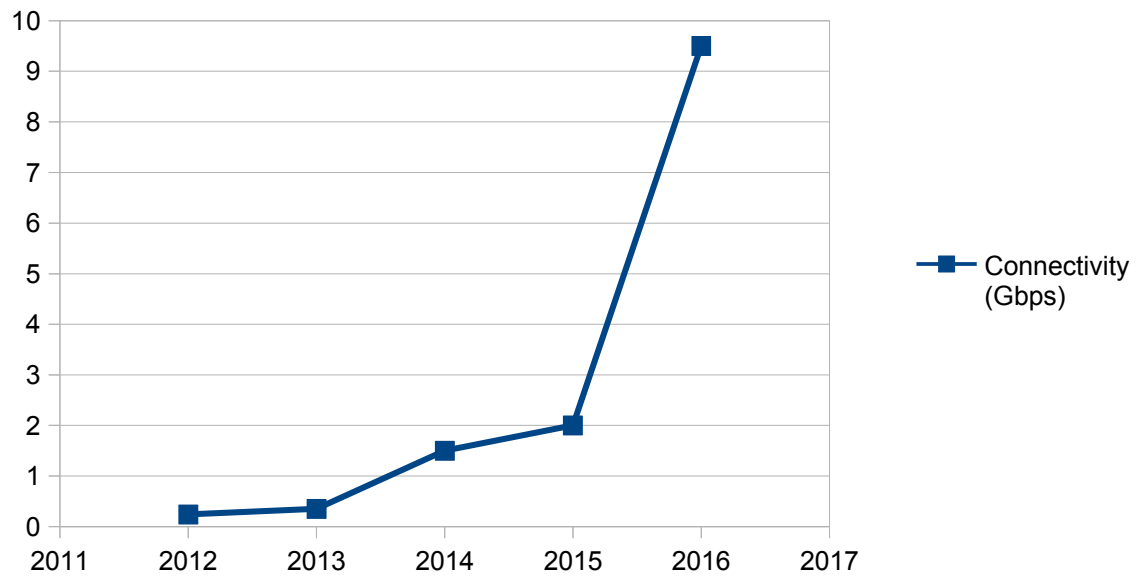
LEARN Core Network Upgrade 2016



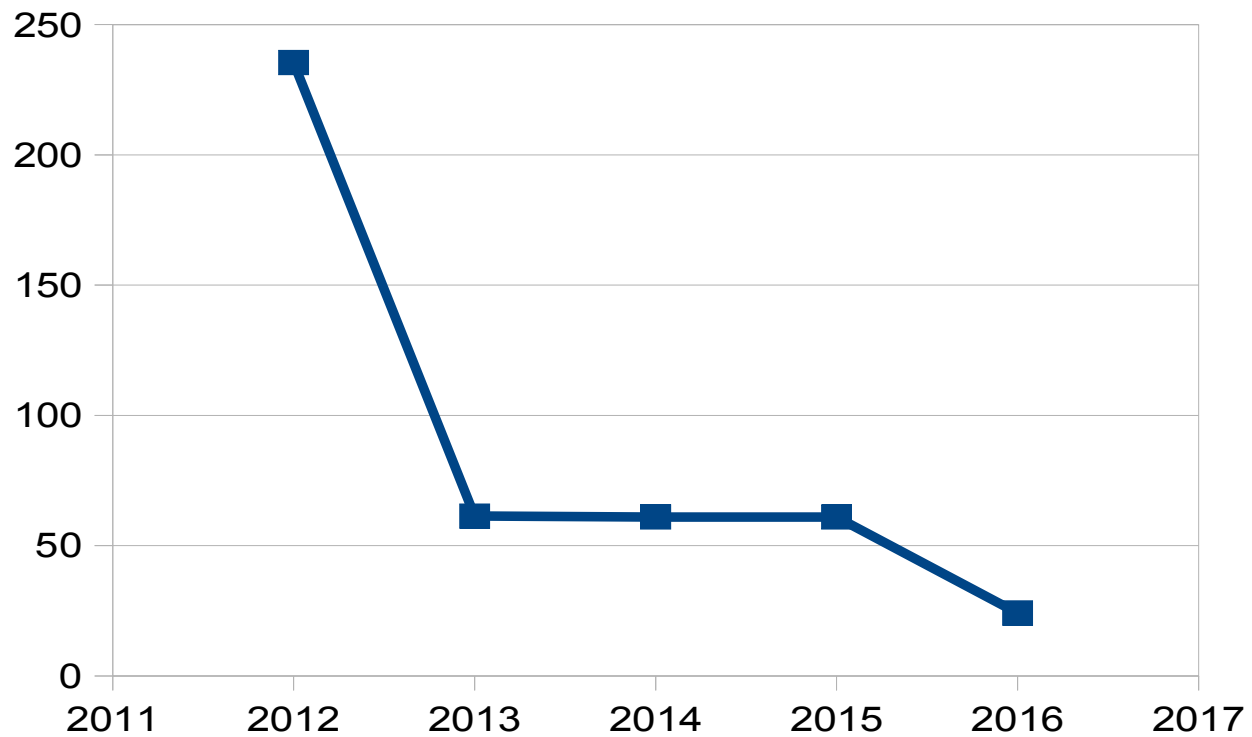
## New BW rates for Member Institutes

- **Members got 3 times the current Internet BW (UoM 240 to 750 Mbps for additional 600,000/=)**
- **Additional Cost 17-25% increase**

# LEARN Internet Connectivity (Gbps)



## Cost of Internet per Mbps (US \$)



- **Eduroam project**
- **Google cache**
- **APAN Secretariat**
- **Atlas Probes and an anchor**
- **Cloud Services**
- **Data Center**

THANKS